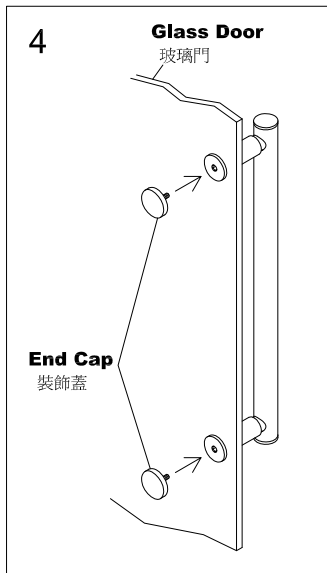
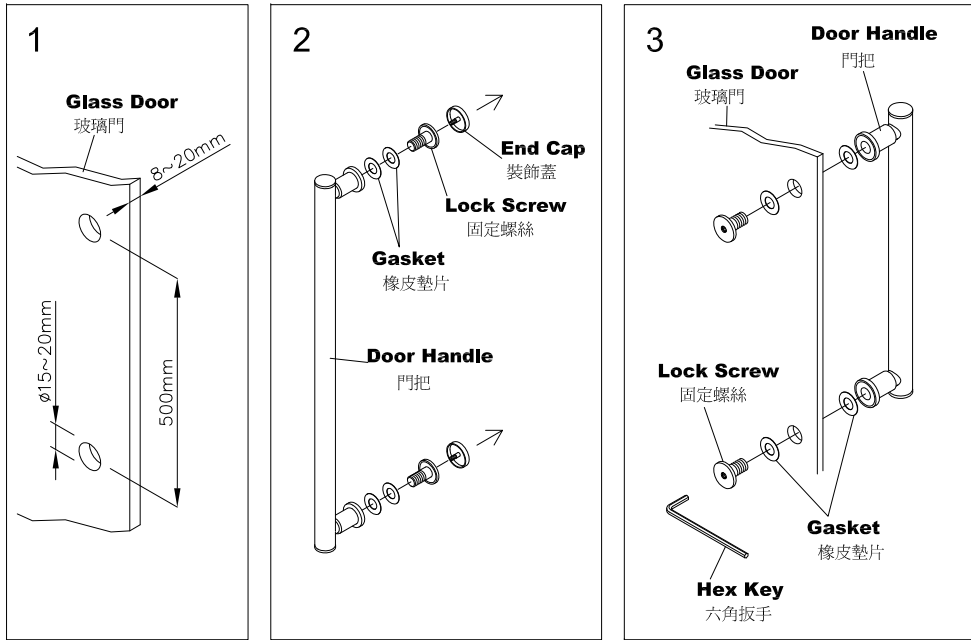


# INSTALLATION INSTRUCTIONS

## Door Handle (50cm) 單把門把安裝說明



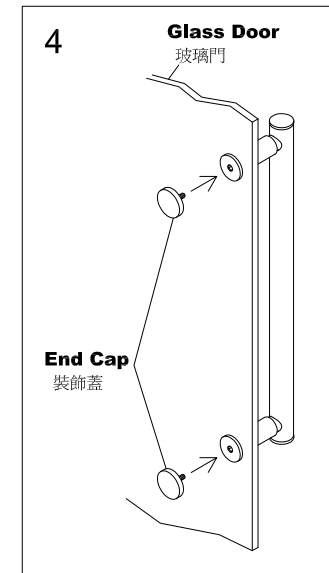
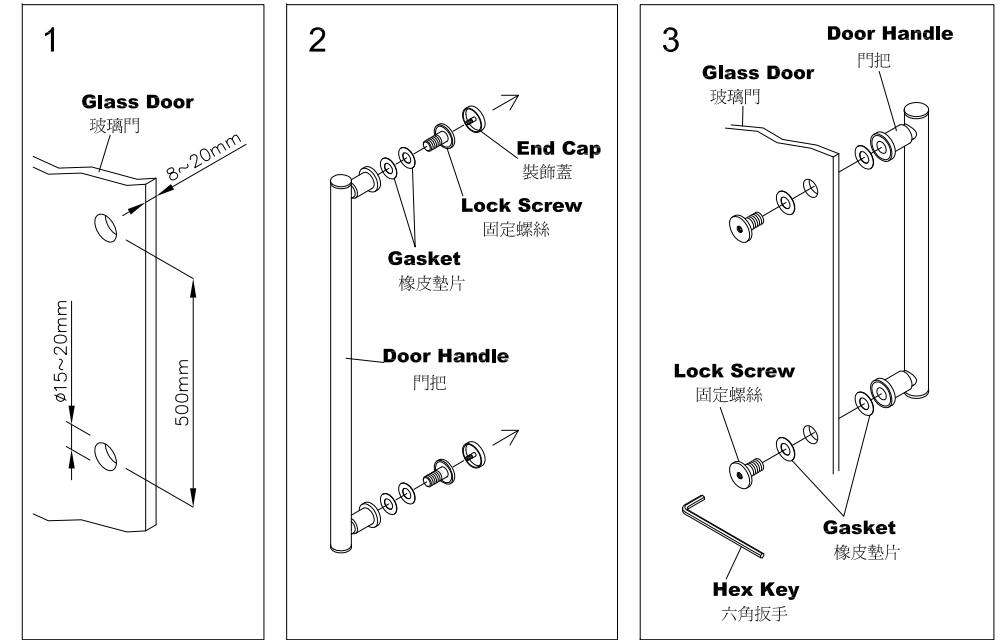
Notes: Glass door install support holes as needed as fig.1 shown.

注意：請於安裝前先確認玻璃厚度為8~20mm，玻璃鑽孔的位置與孔徑大小如圖1所示。

1. Disassemble **Door Handle's** components as fig.2 shown.  
如圖2所示，安裝前先將門把零件由門把上拆卸下來。
2. Installing **Door Handle** as fig.3 shown, then secure and tighten **Lock Screws** with 6 mm **Hex key**.  
如圖3所示，將門把安裝於門上，並使用6mm六角扳手將固定螺絲鎖緊。
3. Tighten the **End Caps** as fig.4 shown.  
鎖緊裝飾蓋，完成安裝程序。

# INSTALLATION INSTRUCTIONS

## Door Handle (50cm) 單把門把安裝說明



Notes: Glass door install support holes as needed as fig.1 shown.

注意：請於安裝前先確認玻璃厚度為8~20mm，玻璃鑽孔的位置與孔徑大小如圖1所示。

1. Disassemble **Door Handle's** components as fig.2 shown.  
如圖2所示，安裝前先將門把零件由門把上拆卸下來。
2. Installing **Door Handle** as fig.3 shown, then secure and tighten **Lock Screws** with 6 mm **Hex key**.  
如圖3所示，將門把安裝於門上，並使用6mm六角扳手將固定螺絲鎖緊。
3. Tighten the **End Caps** as fig.4 shown.  
鎖緊裝飾蓋，完成安裝程序。