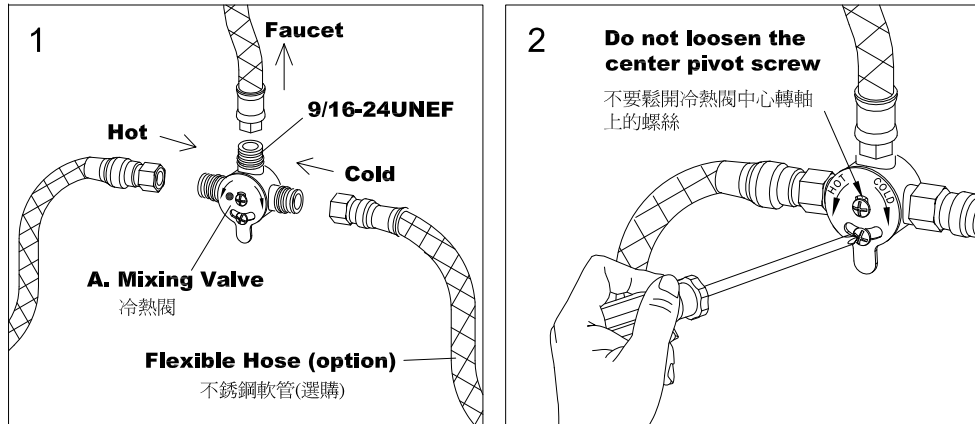


INSTALLATION INSTRUCTIONS

Mixing Valve 冷熱閥



CAUTION : Risk Of Product Damage.

注意：為增加產品使用壽命，請依說明清潔供水管路。

Turn the angle stops (water suppliers) on and run for 1 minute before connect supply hose (flexible hose) to faucet body.

安裝編織管之前，先把供水開關全開排水一分鐘。

1. Fix faucet first, then install **Mixing Valve** on the hot and cold water supplies to the faucet. (fig 1.)

首先將龍頭安裝固定，再將冷熱進水不銹鋼條軟管和冷熱閥本體組合，並且鎖緊固定於龍頭本體下方。

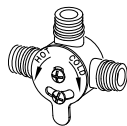
2. Loosen the **Mixing Valve** dial plate lock-screw, adjust the proper water temperature as the direction of the arrows, then tighten the lock-screw to lock adjustment. (Caution: Do not attempt to loosen the center pivot screw.)

鬆開冷熱閥本體上調節溫度的螺絲，適當調整出水溫度，然後鎖緊螺絲。以完成溫度調節的功能。（警告：不要試圖鬆開冷熱閥本體中心轉軸上的螺絲。）

FIXING CONTENTS

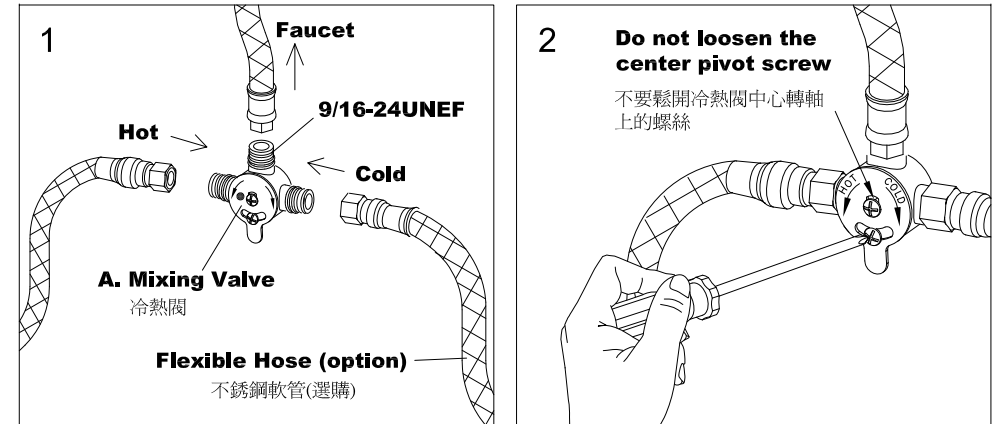
組配件內容

A. Mixing Valve × 1
冷熱閥



INSTALLATION INSTRUCTIONS

Mixing Valve 冷熱閥



CAUTION : Risk Of Product Damage.

注意：為增加產品使用壽命，請依說明清潔供水管路。

Turn the angle stops (water suppliers) on and run for 1 minute before connect supply hose (flexible hose) to faucet body.

安裝編織管之前，先把供水開關全開排水一分鐘。

1. Fix faucet first, then install **Mixing Valve** on the hot and cold water supplies to the faucet. (fig 1.)

首先將龍頭安裝固定，再將冷熱進水不銹鋼條軟管和冷熱閥本體組合，並且鎖緊固定於龍頭本體下方。

2. Loosen the **Mixing Valve** dial plate lock-screw, adjust the proper water temperature as the direction of the arrows, then tighten the lock-screw to lock adjustment. (Caution: Do not attempt to loosen the center pivot screw.)

鬆開冷熱閥本體上調節溫度的螺絲，適當調整出水溫度，然後鎖緊螺絲。以完成溫度調節的功能。（警告：不要試圖鬆開冷熱閥本體中心轉軸上的螺絲。）

FIXING CONTENTS

組配件內容

A. Mixing Valve × 1
冷熱閥

