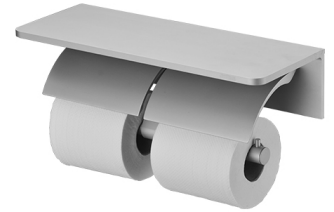


Double Toilet Tissue Holder 6997-42-81CN

INTRODUCTION:

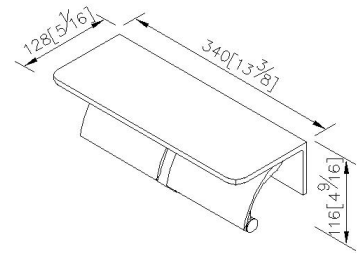
Provides the ultimate in considerate design:

Designers add a successful element - Aluminum Shelf - into the double toilet tissue holder to form a thoughtful and more comfortable design concept.



DESCRIPTION:

1. Aluminium body meets 6061T6 standard.
2. Premium metal construction for durability.
3. Justime finishes resist corrosion and tarnish.
4. Finish meets the standard of ASTM-SC2.
5. Correctly installed product's loading is 5 kgf.
6. Designed with chamfered corners to eliminate any chance of body injuries.
7. Coordinates with other products in JUSTIME collection.



unit: mm[inch]

Certification:

Fixing Kits:

1. SUS 304 Stainless Steel Screws*4
- Plastic Anchors*4

AWARD: